

THERM 100 - Moulded case circuit breaker

100A, 415 V AC, 1 POLE & 3 POLE



GE Power Controls presents the most compact Moulded Case Circuit Breakers for protection against overload & short circuits in distribution circuits.

Features:

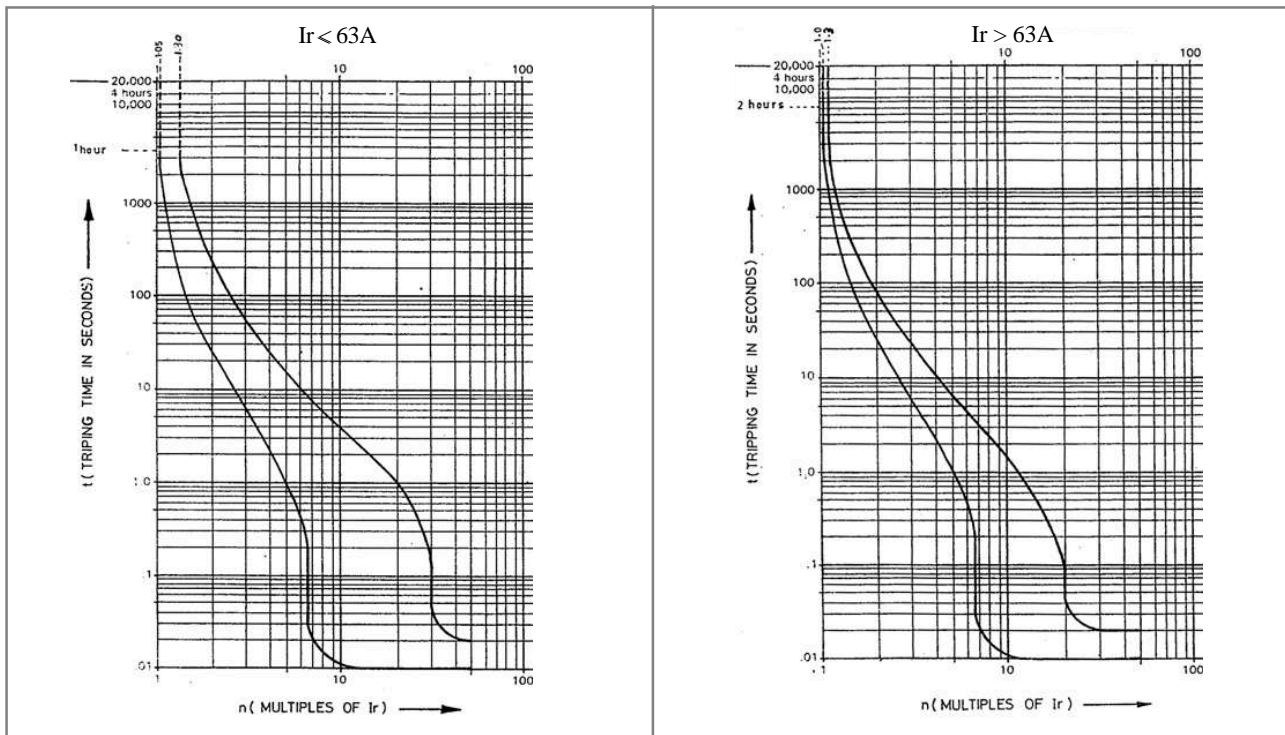
- * Thermal overload & instantaneous magnetic releases.
- * Housed in superior arc resistant moulded enclosure.
- * Distinct 'ON' 'OFF' & 'TRIP' position of operating knob.
- * 'Push to trip' button for checking mechanical integrity of tripping mechanism in 3 pole version.
- * Quick make quick break, trip free mechanism.
- * Unique Arc Chute design, for rapid quenching of arc under fault condition.
- * Large terminal capacity - to suit upto 50 sq mm cables.
- * Short circuit tested for 10 kA (Ics) at 415V, 0.4 pf.
- * Conforms to IS 13947-2
- * Suitable for use in DC system.

Technical Particulars	1 Pole	3 Pole
Thermal current-I(th)	100A	100A
Breaking capacity at 0,4pf Icu = Ics	10kA* 240 VAC	10kA@ 415 VAC
Continuous current setting	100A	100A
Short circuit tripsetting	800A	800A
Terminal capacity Al/Cu cables	50 Sq mm	50 Sq mm
Weight in Kg	0.30	0.80
Overall Dimensions (mm)		
W	35	75
H	120	120
D	76	76

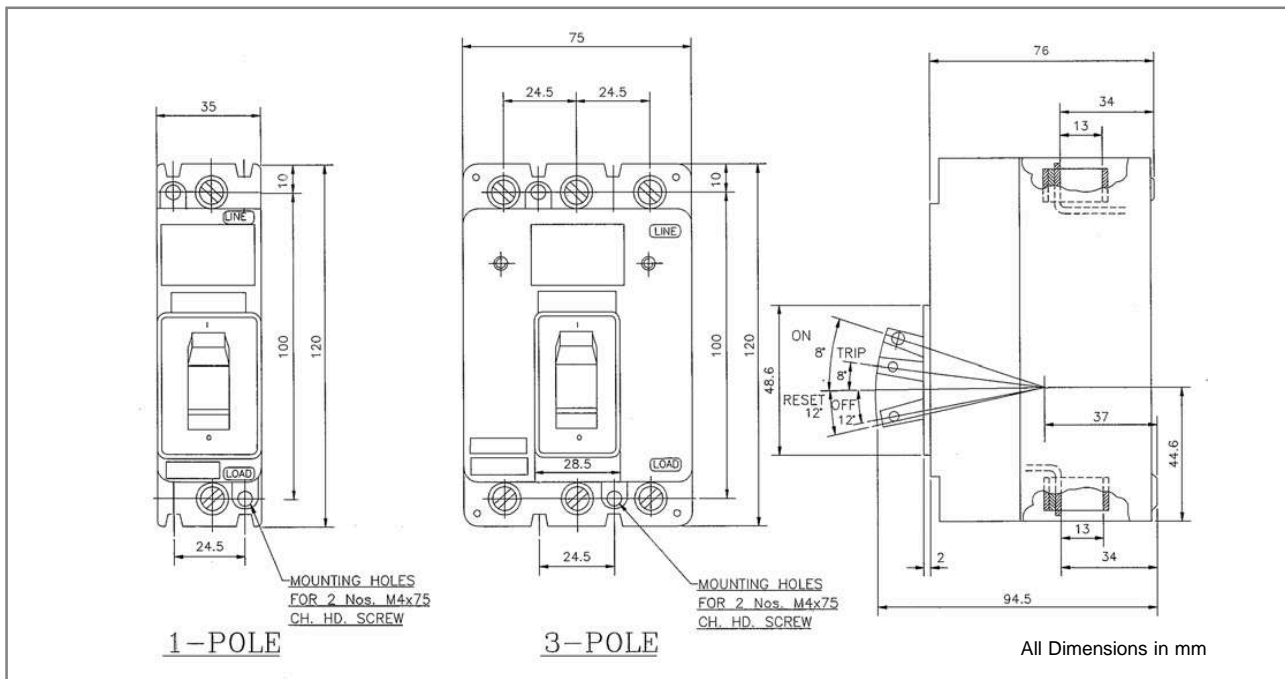
* Also capable of Ics = 5kA @ 415V AC



Operating Characteristics



Dimensional Details



B
106

